



MODELO	EVPN-14					
	4E1	4E2	4E2*	4N1	4N2	4N2*
Nº VIAS	5					
Nº POSICIONES	2	3		2		3
FLUIDO	AIRE					
PRESIÓN DE SERVICIO	1'5-8 kg/cm ²			0-8 kg/cm ²		
PRESIÓN DE PRUEBA	10 kg/cm ²					
CONEXIÓN	1/4"					
ORIFICIO EFECTIVO[mm ²]	35	25		35		25
TEMPERATURA AMBIENTE	5-50°C					
PRESIÓN DE PILOTAJE	-			2-7 kg/cm ²		
TENSIÓN	VDC: 12, 24, 48, 72, 125 VAC: 24, 48, 110, 220 Otras: consultar			-		
PESO [g]	293	387	565	315	402	526

*C, P, R: Indicar función en posición de reposo

REFERENCIA

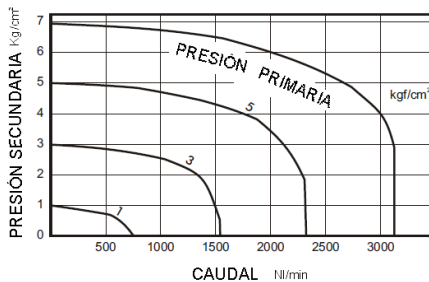
Electroválvula

EVPN14	4	E	1	0	1
Familia	Vías	Tipo de Pilotaje	Num. Pilotajes	ATEX	Tensión
	3: 3 vías	E: Eléctrico	1: 1	0: No ATEX	0: Sin bobina
	4: 5 vías	N: Neumático	2: 2	M: Ex m	1: 220VAC
			2C: 2 + Centros cerrados	Otras: consultar	2: 24VDC
			2P: 2 + Centros abiertos		3: 110VAC
			2R: 2 + Centros a escape		4: 24VAC
					Otras: consultar

Placa Namur convertora 5/2 a 3/2

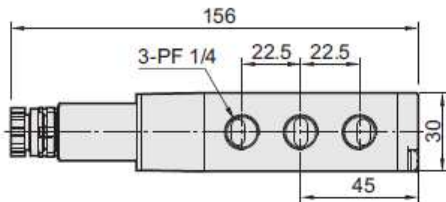
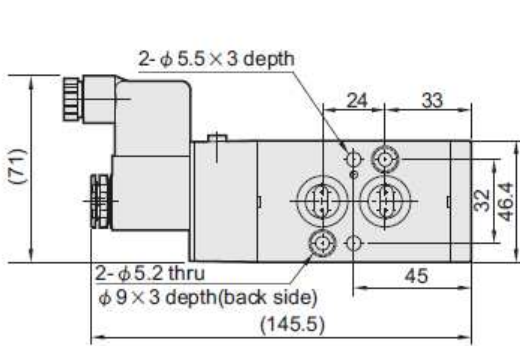
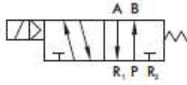
PLACANAMUR145232

CURVA DE PRESIÓN / CAUDAL

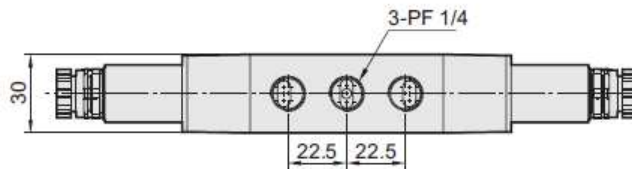
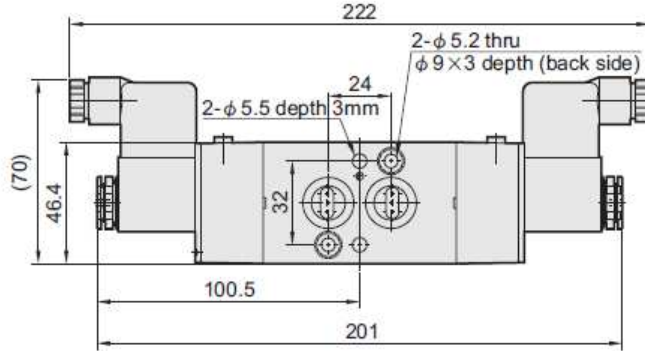
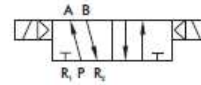


CONSTRUCCIÓN

EVPN-14-4E1

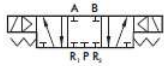


EVPN-14-4E2



EVPN-14-4E2*

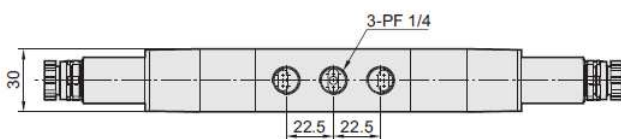
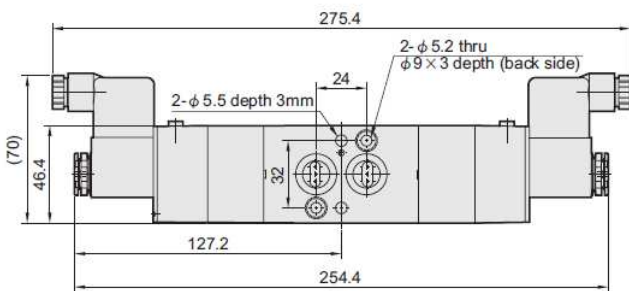
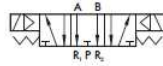
4E2C



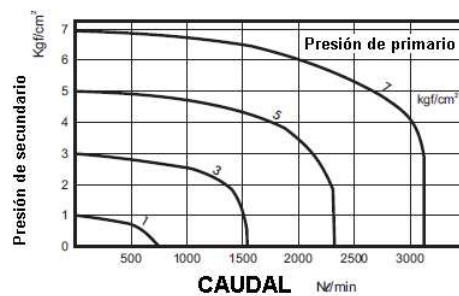
4E2P



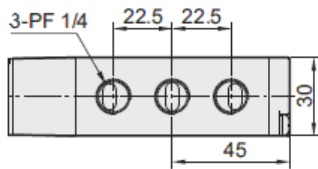
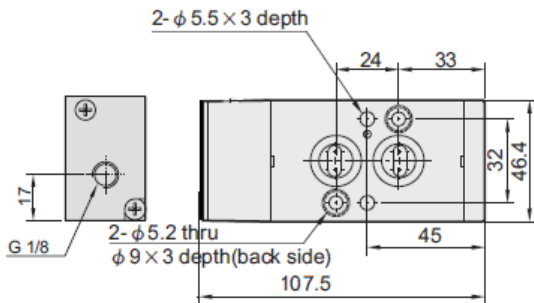
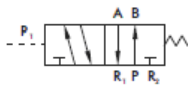
4E2R



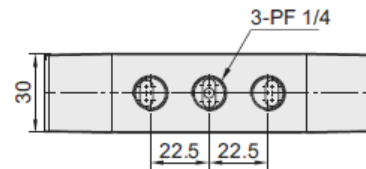
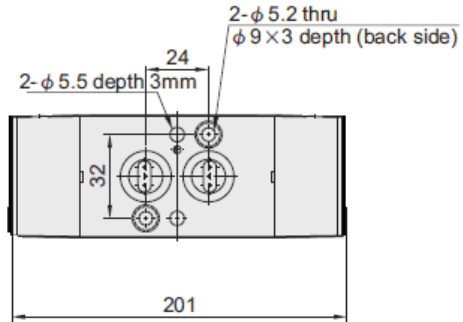
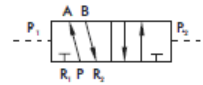
Características de CAUDAL:



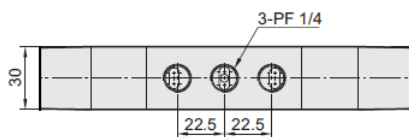
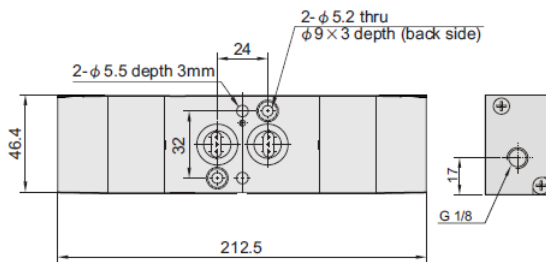
EVPN-14-4N1



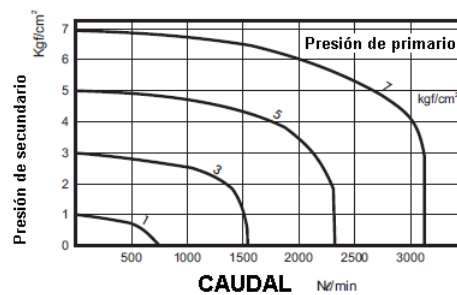
EVPN-14-4N2



EVPN-14-4N2*



Características de CAUDAL:



EVPN-14

ELECTROVÁLVULAS

PLACA NAMUR 52 32

